

How to find us!

The local landmark is the green Fritzenberger building, on the corner of Albany Creek Rd & Ferguson Street. If you can find this, you can find us!

On arriving at the offices, entry is via the laneway entry parallel to Ferguson Street. The offices are *above* LJ Hooker and can be accessed using the stairs at the rear of the building.

There is plenty of Fairway signage to lead the way to us and we look forward to welcoming you when you arrive.

Fairway Financial Advice Pty Ltd

ABN 68 786 381 811

Fairway Too Pty Ltd

ABN 82 601 766 581

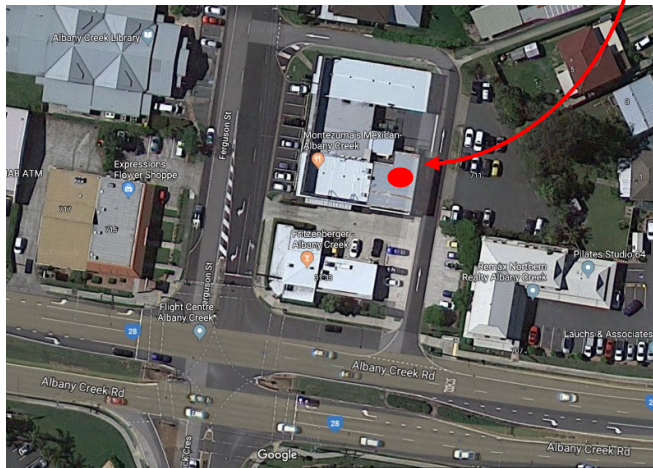
6/25 Ferguson St Albany Creek Q 4035

PO Box 185 Albany Creek Q 4035

P 07 3325 4775 / **F** 07 3325 4776

E info@fairwayfinancial.com.au

www.fairwayfinancial.com.au



By Car

Free car parking is available at the Fairway offices in the car park opposite the entry way or in the surrounding streets.



Disability parking is in the laneway next to Fritzenberger and outside the Public Library on Ferguson Street.

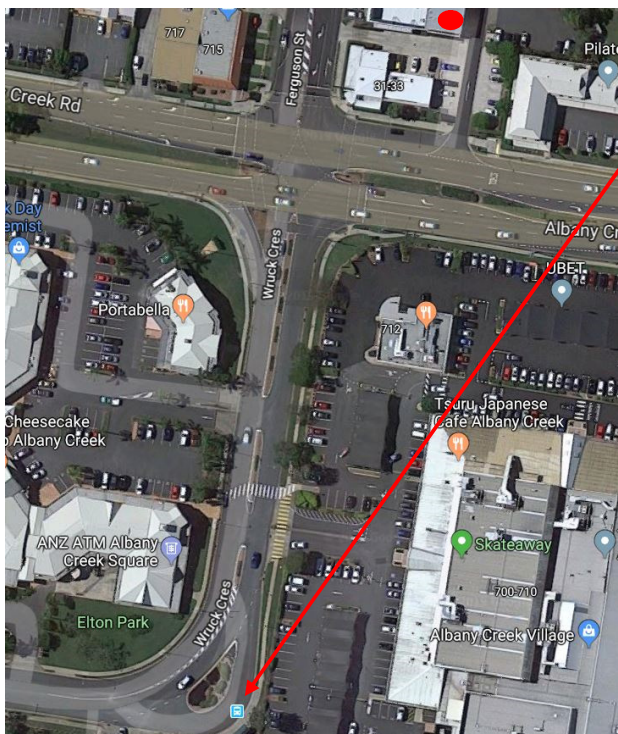
By Bus

Albany Creek is serviced by Brisbane City Council buses.

Route number 338 runs from Chermshire Shopping Centre to Strathpine Shopping Centre

Route numbers 357 and 359 run from the Brisbane City Stop 59 on Queen Street near Creek Street to Albany Creek.

The Albany Creek bus stop is pictured bottom left of the opposite map on Wruck Crescent and is a short walk from the Fairway Offices.



By Train

To reach the offices by train will also require a bus connection via the above routes.

For the Ferny Grove line, the 357 and 359 buses connect on Wardell Street at the Enoggera station.

For the Caboolture/Nambour line, the 338 bus connects at the Strathpine station on South Pine Road or at the Strathpine Shopping Centre.